

THE LION'S ROAR

The monthly newsletter for Penn State Berks



Important Dates

September 5 Labor Day (NO CLASSES)

August 15 - September 6 Intent to Graduate Filing Period*

September 6 - September 14 Starfish Early Progress Reporting Period

September 13 - September 16 Fall Career Days at University Park

September 22 Installment Payment Plan (IPP) Payment #2 Due**

*Students who intend on graduating in December 2022, should file their intent to graduate in LionPATH. More information [here](#) ✨

**If you enrolled in the Installment Payment Plan (IPP) by the first payment (8/29), your second, third, and fourth installments are due on the 22nd of the three subsequent months. Read more on the IPP, [here](#) ✨

What's Inside:

- Important Dates (p. 1)
- Did You Know: Paw Prints (p. 1)
- Maintaining Wellness (p. 2)
- Fall Career Fair (p. 3)
- Academic Advising (p. 3)
- Academic Excellence (p. 4)
- Financial Aid vs Bursar (p. 5)
- A Berks Bite (p. 6)
- Starfish Progress Reporting (p. 6)

PAW PRINTS: STUDENT PRINTING

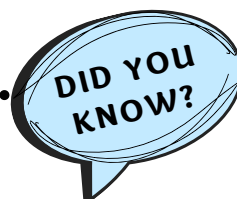
The PAW Prints system is a modern cloud-based, **pay-as-you-go printing** system that offers convenience and individualized experiences for students, faculty, staff, and visitors!

The Paw Prints kiosks provide cloud-based **printing in mono (i.e., black & white) and color**. Students can print from any device and pay by LionCash or credit card. **The cost per page is \$0.08 per single-sided mono page and \$0.14 per double-sided mono page. Color rates are \$0.35 single-sided and \$0.60 double-sided.**

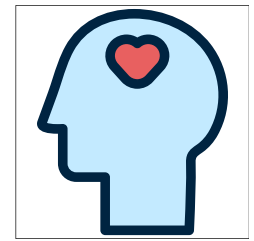
There is **one print release station in each building** listed below and will be the only student printer in the building.

- Franco Lobby near the Bursar's Office
- Gaige Lobby across from the Cyber Café
- Luerssen Hallway near the faculty office suite 101
- Perkins Student Center second floor hallway across from the Creekside Market
- Thun Library across from the I.T. Help Desk
- Bowman Lounge

Learn more at <https://pawprints.psu.edu/> ✨



THE LION'S ROAR



The monthly newsletter for Penn State Berks

MAINTAINING WELLNESS



Physical & Social

Beaver Athletic and Wellness Center (BAWC)

- Monday-Thursday from 7:30am - 11pm
- Friday from 7:30am-6:00pm
- Saturday & Sunday from 12pm-5pm

Club & Intramural Sports

- Learn more about these sports [here](#)👉

Student Clubs & Organizations

- Explore the full list of active student clubs and organizations [here](#)👉



Emotional & Spiritual

Counseling

- Short-term counseling is provided **FREE OF CHARGE** to all current Penn State Berks students. Appointments include evening hours!
- Learn more [here](#)👉

Yoga & Meditation Society (YAMS)

- This student organization meets on Wednesdays from 12:15pm-1:15pm in the BAWC Dance Studio

Religious Student Organizations

- Explore the list of special interest clubs [here](#)👉



Wellness Wednesday is Sept. 28

- **11am-1pm:** Palm Reading & Sleep Program (Perkins Lawn)
- **12:15pm**
 - YAMS Yoga Session (BAWC Dance Studio)
 - Adult Learner Labyrinth Walk (Labyrinth)
- **12-2pm:** Therapy Dogs (Perkins Plaza)
- **5pm** (Lion's Den-101 Perkins)
 - CAB Smoothie Bike & Blend
 - Counseling Services Meet Your Brain Trivia
- **8pm:** Peer Health Educator's Sex After Dark (Perkins Auditorium)

This Week at Berks

Keep up with weekly events by checking *This Week at Berks*, your weekly events and announcements newsletter! It is sent to current Berks students by email (to PSU email addresses only) every Sunday evening at 8:00pm!

Stay informed of campus activities, follow us on social media!

INSTAGRAM:

@berkscampuslife
@berkswelcomeleaders
@psubk_cab

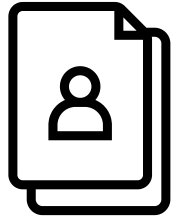


FACEBOOK:

Official Penn State Berks Class of 2026
Penn State Berks Student Life



THE LION'S ROAR



The monthly newsletter for Penn State Berks

FALL CAREER FAIR

Career Fair Dates

The Career Fair is held in-person at the Bryce Jordan Center at University Park, PA.

Tuesday, September 13 | 11am - 4pm

- Non-Technical Full-Time
- Transportation sign up:
<https://www.signupgenius.com/go/10c0d4fa4ae2aa3fec52-transportation>

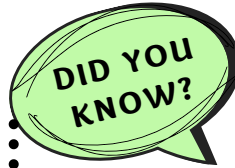
Wednesday, September 14 | 11am - 4pm

- Internship & Co-op
- Transportation sign up:
<https://www.signupgenius.com/go/10c0d4fa4ae2aa3fec52-transportation1>

Thursday, September 15 | 11am - 4pm

- Technical Full-Time
- Transportation sign up:
<https://www.signupgenius.com/go/10c0d4fa4ae2aa3fec52-transportation2>

Learn more about the Career Fair [here](https://studentaffairs.psu.edu/career/fairs/fall)



BEFORE

- Wednesday, September 7
 - 12:15-1:15pm: Career Fair Prep (Perkins 3)

DURING

Need a ride? Career Services is providing transportation! Sign up is on a first come, first served basis so don't delay!

Transportation links provided by date in the "Career Fair Dates" section.

AFTER

- Make an appointment to discuss next steps including preparing for interviews and reviewing/accepting offers!

Career Services at Berks supports students in preparation for University Park's Fall Career Fair!

Contact Career Services

Website: berks.psu.edu/career-services

Phone: 610-396-6368*

010 Perkins Student Center

*No answer? Leave a message with your name, phone number, 9-digit PSU ID number, and reason for calling!

ACADEMIC ADVISING

Location: Franco 160 | Email: bkadvisingcenter@psu.edu | Phone: 610-396-6280

Majors & Course Load

Top 4 Reasons To Meet With An Adviser This Semester

1. Create an appropriate **course schedule** to remain on track towards graduation.
2. Develop a deeper understanding of **requirements and/or changes** to your major.
3. Learn about **policies and deadlines** that could benefit you (e.g., grade forgiveness; course repeats, etc.).
4. Explore **opportunities and resources** that could augment your academic experiences.

- Unsure of your major? Contemplating several majors?
 - Meet with your academic adviser to talk about your ideas and learn about the University resources available to help you learn more!
 - Find your assigned academic adviser listed in [LionPATH](#) and/or on [Starfish](#)!
- A student's academic course load will impact their degree progression and financial aid eligibility.
 - To be considered a full-time student, you must enroll (**and maintain for the duration of the semester**) at least 12 credits.
 - To be considered a part-time student, you must enroll (**and maintain for the duration of the semester**) between 6 and 11 credits.
 - Learn more [here](#)

THE LION'S ROAR



The monthly newsletter for Penn State Berks

ACADEMIC EXCELLENCE

FREE

MATH PEERS & PROFS TUTORING



WHAT: FREE math help sessions hosted by math faculty and math teaching assistants

WHEN: Mondays and Wednesdays during common hour-- from 12:15pm - 1:15pm

WHERE: 222 Luerssen

COURSES SUPPORTED: Math 4, 21, 22, 26, 34, 35, 41, 110 and Stat 100

No appointment necessary!

FREE

LEARNING CENTER & WRITING CENTER PEER TUTORING



Need help with Math, Science, or Study Skills?

Make an appointment with our Learning Center Tutors [here](#)✎

Need help with a paper, speech, resume, or other written material?

Make an appointment with our Writing Center Tutors [here](#)✎

Peer Tutoring is always FREE!

Student Disability Resources (SDR)

Students who had learning accommodations in high school can continue to receive learning accommodations at Penn State. Students with disabilities are encouraged to contact or visit the Student Disability Resources office **as soon as possible** to discuss academic accommodations as they may differ from those offered in high school.

Learn more [here](#)✎

✎ Data suggests that students who utilize academic services have higher success and retention rates when compared to students in the same courses who do **not** utilize those same services. Set your schedule and habits for semester-long success!

**DID YOU
KNOW?**

Thun Library Services

- The Thun Librarians are here to help with your research! Schedule a consultation✎ and learn more✎
- Located in the Thun Library, Media Commons offers digital and multimedia technology resources to Berks students, faculty, and staff. Learn more about how to reserve Berks Media Commons equipment and spaces✎
- Course reserves are textbooks for specific courses that are available to students for free use in the library. Search [here](#)✎ or contact Barb Lessig (bz11@psu.edu) for assistance.

Learn more about Thun [here](#)✎



THE LION'S ROAR

The monthly newsletter for Penn State Berks

WHAT'S THE DIFFERENCE? FINANCIAL AID VS BURSAR

What is the Financial Aid Office?

The Financial Aid Office is responsible for the awarding and disbursement of financial aid.

This is the office students contact if they have been selected for verification, have questions about the FAFSA, and/or want to know their aid amount and type (e.g., loans, scholarships, grants).

Important note:

Penn State cannot meet the full financial need of all students. Students and their families/supporters have the primary responsibility of paying tuition and other costs. Education loans comprise the largest percentage of all available student aid.

Learn more about Financial Aid here:

- **Berks:** <https://berks.psu.edu/financial-aid>
- **University:** <https://studentaid.psu.edu/>

Contact Financial Aid

Email: BerksFinAid@psu.edu

Phone: 610-396-6070*

014 Perkins Student Center

**No answer? Leave a message with your name, phone number, 9-digit PSU ID number, and reason for calling!*

What is the Bursar?

- The Office of the Bursar is responsible for maintaining student accounts pertaining to tuition billing, acceptance fees, charges, payments, posting of Financial Aid, and refunds (when applicable).

Which payment forms are accepted by the Bursar?

- This office accepts student payments in a variety of forms including via E-check & credit card through LionPATH, cash, check, or money order/certified check.

Is there a payment plan?

- Students may enroll in the Installment Payment Plan (IPP), allowing payments in increments over 4 months. More information about the IPP can be found [here](#).
- When enrolling in the IPP in September, half of the balance due is required at the time of enrollment. Please note that there is a \$45 enrollment fee.

Learn more about the Bursar here:

<https://www.bursar.psu.edu/>

Contact Bursar

Email: bkbursar@psu.edu

Phone: 610-396-6040*

125 Franco Building

**No answer? Leave a message with your name, phone number, 9-digit PSU ID number, and reason for calling!*

Veteran's Benefits



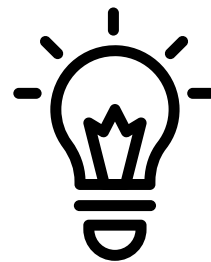
The Registrar's Office is the point of contact for all VA certifications.

Contact the Registrar's Office

Telephone: 610-396-6085

Email: BKVeterans@psu.edu

THE LION'S ROAR



The monthly newsletter for Penn State Berks

A BERKS BITE: Blueberry Pancakes in a Jar



Ingredients

- 1/4 cup blueberries
- 1 cup prepared pancake batter (homemade or prepared from a mix)
- 2 tablespoons maple syrup
- 2 teaspoons sugar

Instructions

- Using 2 wide-mouthed mason jars (pint), add 1 tablespoon blueberries to each, followed by 1/4 cup of the batter to each. Top each with 1 tablespoon maple syrup, then another tablespoon blueberries and another 1/4 cup batter.
- Sprinkle the tops with 1 teaspoon sugar.
- Microwave the jars one at a time until the mixture is fluffy and puffed over the edge of the jar, about 2 minutes 40 seconds.

Recipe adapted from the [Food Network](#)

STARFISH PROGRESS REPORTING

What is Starfish??



Starfish is an online system that connects you to the people and services that can help YOU navigate YOUR education.

Starfish does this by facilitating communication between your advisor, instructors, and support services.



Check Your PSU Email

During weeks 3-4 and 7-8 of each semester, instructors are prompted to comment on student progress in their class(es) utilizing Starfish. Pay special attention to this time period for important feedback, which will come from:
notices@starfishsolutions.com

TIP: Do NOT delete this email. It is NOT spam.



Get Started NOW!

Upload a picture, set your preferences, and explore! sites.psu.edu/starfishinfo



Don't Make Assumptions!

If you do NOT receive notices from instructors, do not assume that this means that you are in the clear! Instructors have the option of notifying students of their progress in their class--not all instructors complete Starfish reports.

TIP: Make an appointment with your instructor(s) to discuss your progress.



I received a Starfish notification, now what do I do?



Take Action Immediately!

MEET: Discuss the feedback with your Instructor.

REFLECT: Which behaviors contributed to the feedback?

COMMIT: Make improvements to see greater success.